

# User Guide

# Geotec

## Installation

Version 8.09



Installation of Geotec – Version 8.09  
User Guide

Warning: This manual is protected by the copyright law and by the international conventions. Any reproduction or distribution of this manual, partially or totally, by any means, is strictly forbidden, unless a permission is written by SOBEK TECHNOLOGIES INC. Anybody who does not respect these rules is guilty of misdemeanour of infringement and is punishable by the law.

Geotec is a registered trademark of SOBEK TECHNOLOGIES INC.

Published by: SOBEK TECHNOLOGIES INC.  
4205 Northcliffe  
Montreal (Quebec)  
H4A 3L2  
Phone: (514) 285-4873  
E-mail: [genevieve@sobek-technologies.com](mailto:genevieve@sobek-technologies.com)

The information in this manual could be modified without notice and would not be binding to SOBEK TECHNOLOGIES INC. **This version of the documentation was updated in February 2018 with version 8.09 of Geotec.**

TRADEMARK:

In this guide, we refer to these registered products:

Access is a registered trademark of Microsoft Corporation  
Developer/2000 is a registered trademark of Oracle Corporation  
Excel is a registered trademark of Microsoft Corporation  
Forms is a registered trademark of Oracle Corporation  
ORACLE is a registered trademark of Oracle Corporation  
SQL\*Plus is a registered trademark of Oracle Corporation  
SQLite is public domain  
SQL Server is a registered trademark of Microsoft Corporation  
Windows is a registered trademark of Microsoft Corporation  
XI is a registered trademark of ORCA Software Inc.  
XVT (Portability Toolkit) is a registered trademark of XVT Software Inc.

---

# INSTALLATION - TABLE OF CONTENTS

---

<b>LIST OF FIGURES</b>	<b>i</b>
<b>INSTALLATION OF GEOTEC</b>	<b>1</b>
1. Installation on individual workstation	1
2. Installation on server	2
On each workstation...	2
3. Protection	2
3.1. Time-limited individual licence	2
3.2. USB licence	2
3.3. Network licence	3
3.4. Temporary licence with NOKEY	3
4. Installation of the major version of Geotec	3
5. ODBC link	5

## LIST OF FIGURES

Figure 1 - ODBC Data Source Administrator	5
Figure 2 - ODBC installation for Access	6
Figure 3 - Creation of a new datasource	6

---

# INSTALLATION OF GEOTEC

The Geotec software is compatible with Microsoft Windows 7, 8 and 10.

Geotec uses various ASCII or binary data files and also files from the Microsoft Access, SQL Server, SQLite or Oracle (version 11) database systems. Geotec uses the function libraries from the XVT PortabilityToolkit of XVT Software Inc. and XI of ORCA Software Inc. for the management of windows, dialog boxes and menus.

Geotec uses the Geo, X3D and SM2 libraries created by Sobek Technologies Inc. for data editing, the definition of the presentation style, and viewing and editing graphic results.

The Geotec installation includes the applications, the utility programs, the libraries, the documentation, the style files and the Geotec database (MS Access).

Whatever the database management system used to manage the Geotec database (Access, SQL Server, SQLite or Oracle), it must be installed for the Geotec modules to communicate with the database. Sobek does not provide any documentation on the installation of the database management system. When a module connects to an Access or SQL Server database, an ODBC link is automatically created (see paragraph 5 for more details on the ODBC links).

- Paragraph 1 details the Geotec installation on an individual workstation
- Paragraph 2 details the Geotec installation on a server
- Paragraph 3 details the steps to take depending on the type of licence purchased
  - Time-limited individual licence (3.1)
  - USB licence (3.2)
  - Network licence (3.3)
  - Temporary licence with NOKEY (3.4)

---

## 1. INSTALLATION ON INDIVIDUAL WORKSTATION

1. Download the Geotec major version at <http://www.sobek-technologies.com/en/download.php> and install it on the workstation. See paragraph 4 for all details.
2. For all databases **except Oracle**: In the Geotec80\Bin directory created on the workstation, unzip the file Ora11g.zip.
3. If there is a more recent patch, download it at <http://www.sobek-technologies.com/en/download.php> and unzip its content into the Geotec80\Bin directory created on the workstation.
4. To use **SQLite databases (.db3)**, execute the file **sqliteodbc.exe** from the Geotec80\Bin directory created on the workstation if an 8.08 or more recent patch was downloaded and unzipped.

---

## 2. INSTALLATION ON SERVER

1. Create a directory on the server where Geotec will be installed and from which a mapping can be generated for your users. The users will have full privilege access to that directory. For example, create "C:\Sobek\" where Geotec80 will be installed.
2. Download the Geotec major version at <http://www.sobek-technologies.com/en/download.php> and install it on the server. See paragraph 4 for all details.
3. For all databases **except Oracle**: In the Geotec80\Bin directory created on the server, unzip the file Ora11g.zip.
4. If there is a more recent patch, download it at <http://www.sobek-technologies.com/en/download.php> and unzip its content into the Geotec80\Bin directory created on the server.

### On each workstation...

5. Install the major version of Geotec for the users by specifying the disk (mapping) of the server where Geotec is installed (\Geotec80\Bin directory on the server) and by using the installation option «Client portion» (see paragraph 4). This option is used to install the shortcuts on the workstations as well as the parameters in the registry.
6. To use **SQLite databases (.db3)**, from the workstation, execute the file **sqliteodbc.exe** from the Geotec80\Bin directory on the server if an 8.08 or more recent patch was downloaded and unzipped.

---

## 3. PROTECTION

### 3.1. Time-limited individual licence

1. Do the installation on individual workstation (see paragraph 1).
2. Launch the **wstcode.exe** application from the C:\Geotec80\Bin directory in Windows Explorer or specify the entire path with the DOS command line. Example: **C:\Geotec80\Bin\wstcode**
3. Send the file **wst\_date&time.sbk** by email at [license@sobek-technologies.com](mailto:license@sobek-technologies.com).
4. Sobek will send you a **code.wst** workstation licence file.
5. Copy this **code.wst** file in the C:\Geotec80\Bin directory on the workstation.
6. Double-click on the Geotec 80 folder created on the desktop during the installation and open one of the purchased modules by double-clicking on its icon.
7. Enter the PIN provided by Sobek by email. All the purchased modules will now be available for the period of the purchase.

### 3.2. USB licence

1. Do the installation on individual workstation or on server.
2. For each workstation to use, connect the USB key to one of the USB ports of the workstation. The electroluminescent diode (ELD) of the key should flash for a few seconds, then stay lit once the USB port is activated successfully.

**WARNING:** It may happen that the key does not activate for a given USB port (the ELD keeps flashing). In this case, connect the key to another USB port.

3. Double-click on the Geotec 80 folder created on the desktop during the installation and open one of the purchased modules by double-clicking on its icon.
4. Enter the PIN provided by Sobek (and indicated on the key). All the purchased modules will now be available.

### 3.3. Network licence

1. Do the installation on server (see paragraph 2).
2. On the server where Geotec is installed, launch the **srvcode.exe** application from the \Geotec80\Bin directory in Windows Explorer or specify the entire path with the DOS command line. Example: **C:\Sobek\Geotec80\Bin\srvcode**
3. Send the file **date&time.sbk** by email at [license@sobek-technologies.com](mailto:license@sobek-technologies.com).
4. Sobek will send you a request to confirm the information contained in the **date&time.sbk** file.
5. Sobek will then send you a **pin.srv** server licence file.
6. Copy the server licence file **pin.srv** in the \Geotec80\Bin directory on the server where Geotec is installed.
7. Set up a task scheduler that will launch every half-hour the **srvfile.exe** application with the parameter /p followed by the PIN. The .srv file name is made of the PIN. The **srvfile.exe** application must be launched from the \Geotec80\Bin directory and must specify the entire path. Example: **C:\Sobek\Geotec80\Bin\srvfile /p 1234567890**
8. After the first execution of srvfile, a **sbksrv.lic** file should have been created in the \Geotec80\Bin directory.
9. Give writing permission to the \Geotec80\Bin directory to the Geotec users.
10. On each workstation, when one of the modules of Geotec is first launched, a dialog box is displayed, asking for the PIN. Once the PIN is entered, the users will have access to all the modules purchased.

### 3.4. Temporary licence with NOKEY

1. Do the installation on individual workstation or on server.
2. Double-click on the Geotec 80 folder created on the desktop during the installation and open the module being tested by double-clicking on its icon.
3. Enter the PIN provided by Sobek by email.
4. Enter the NOKEY code provided by Sobek. Please note that there is a different NOKEY code for each module.

---

## 4. INSTALLATION OF THE MAJOR VERSION OF GEOTEC

Download the Geotec major version at <http://www.sobek-technologies.com/en/download.php>

1. Execute the Geotec807\_Eng.exe program. When it is executed, the configuration of Windows Installer is done automatically. If Windows Installer has never been used on the workstation

where Geotec is being installed, a message asks the user to restart the system. Click on **Restart**.

2. When the configuration of Windows Installer is completed, the welcome window of the “InstallShield Wizard for Geotec 8.07” is displayed. Click on **Next**.
3. The licence agreement is then displayed. Check the pertinent radio button and click **Next**. The End-User Licence Agreement is also available here: <http://sobek-technologies.com/files/license-eng.pdf>
4. Accept or correct the client information displayed and click on **Next**.
5. The target folder is then displayed with the **C:\Geotec80\** directory proposed by default.

At this stage, the user must know if the installation is of **Geotec** or of the client portion, i.e. the installation of the links towards a previous installation of Geotec on a network server.

- a. If the installation to be done is of Geotec, accept the proposed directory or modify it by clicking on **Change...**

To modify the directory, browse through the tree structure or enter a directory in the “**Folder name**” field; if you enter a non-existent folder name, it will be created.

Once the directory is selected, click on **OK**.

- b. If the installation to be done is of the client portion, the user must indicate where Geotec is installed. Click on “**Change...**” and browse through the tree structure to the Geotec directory.
  - c. Once the target folder is specified, click on **Next**.
6. The window for selecting the type of installation is then opened. Select the type of installation by clicking on the appropriate radio button:
    - a. The **default** installation is appropriate for a complete installation of Geotec on an isolated workstation or a server.
    - b. The **workstation** installation is done on a workstation connected to a network once Geotec is installed on this network server.
    - c. The **custom** installation is identical to the default one but is used to selected specific elements.
    - d. Once the type of installation is selected, click on **Next**.
  7. If the user selected the default or the workstation installation, a summary of the selections is displayed. If everything is correct, click on **Install**.

With the custom installation, the list of the Geotec functions is displayed in a linear tree structure. If a function has various sub-functions, a “+” will appear on the left; click on the “+” to see the sub-functions. By default, all the Geotec functions are selected for the installation on the local hard disk.

Currently, the only possible intervention is to remove a function or sub-function from the installation. To do this, click on the icon on the left of the function or sub-function not to be installed and select the red cross from the list of icons.

After selecting all the functions to remove from the installation, click on **Next**. A summary of the selections is then displayed. If everything is correct, click on **Install**.

8. For the **default** and **customized** installations, the creation of the directories and shortcuts, the copy of the selected files as well as the saving of the parameters then take place. For a **client** installation, only the shortcuts and the saving of the parameters take place. Click **Finish** when the window indicating the end of the installation is displayed.

## 5. ODBC LINK

All Geotec modules connect to a database. If the database used is not managed by Oracle, an ODBC link must be established in order for the modules to be connected.

During the installation, a connection string is entered as the calling argument in the **Target** field of the properties of the icons used to launch the Geotec modules. This connection string uses the ODBC link **geotec\_access**. The user can create other ODBC links to connect to other implementations of the database.

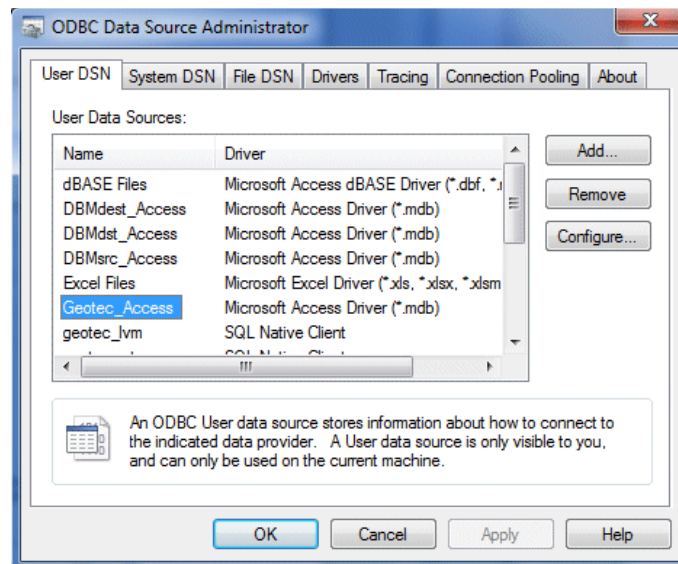


Figure 1 - ODBC Data Source Administrator

In the case where the connection to a database cannot be done, the user must verify if the ODBC link specified as the calling argument is correctly defined and if it points to a valid database. This verification is described with a connection to a database managed by Access, the most common case. The user must:

1. Open the ODBC data source management tool (see figure 1), in the administrative tools of the Windows configuration panel.
2. Verify if the ODBC link appearing in the connection string is in the defined links.
3. If this link exists, verify if it points towards a valid database by clicking on **Configure...**, which opens the window shown in figure 2.



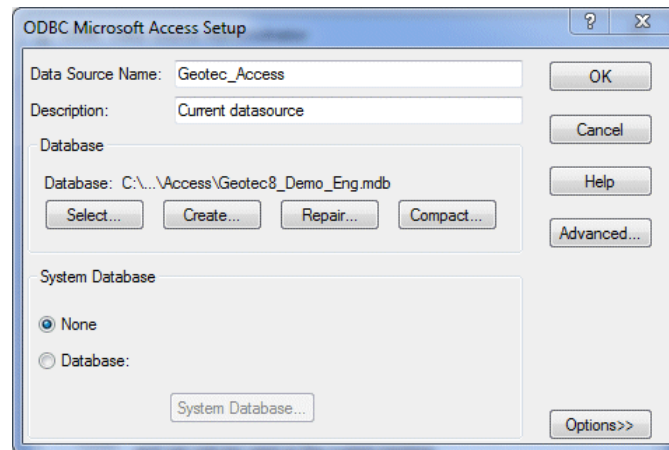


Figure 2 - ODBC installation for Access

The name of the database towards which the link points is shown in the central rectangle of the window. If it is not valid anymore, the user can select another database to assign for the link by clicking on **Select...**

4. If this link does not exist, the user must create it by clicking on **Add...**, thus opening the window shown in figure 3.

The user chooses the Access driver, in our example, and clicks on **Finish**, which opens the ODBC installation window for Access (see figure 2) which is empty. The user enters the desired link name in the **Data Source Name** field, a description of this link and then selects the database to which the link points by clicking on **Select...**

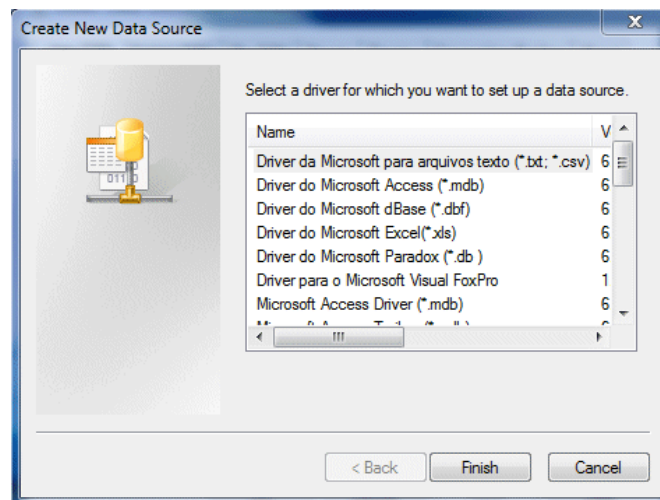


Figure 3 - Creation of a new datasource