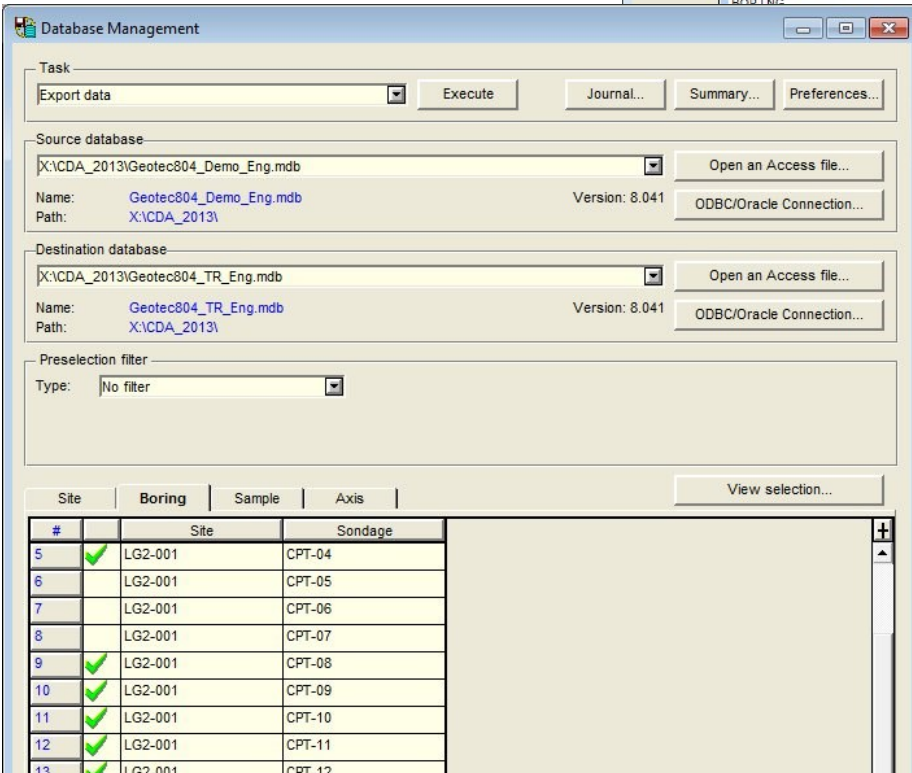
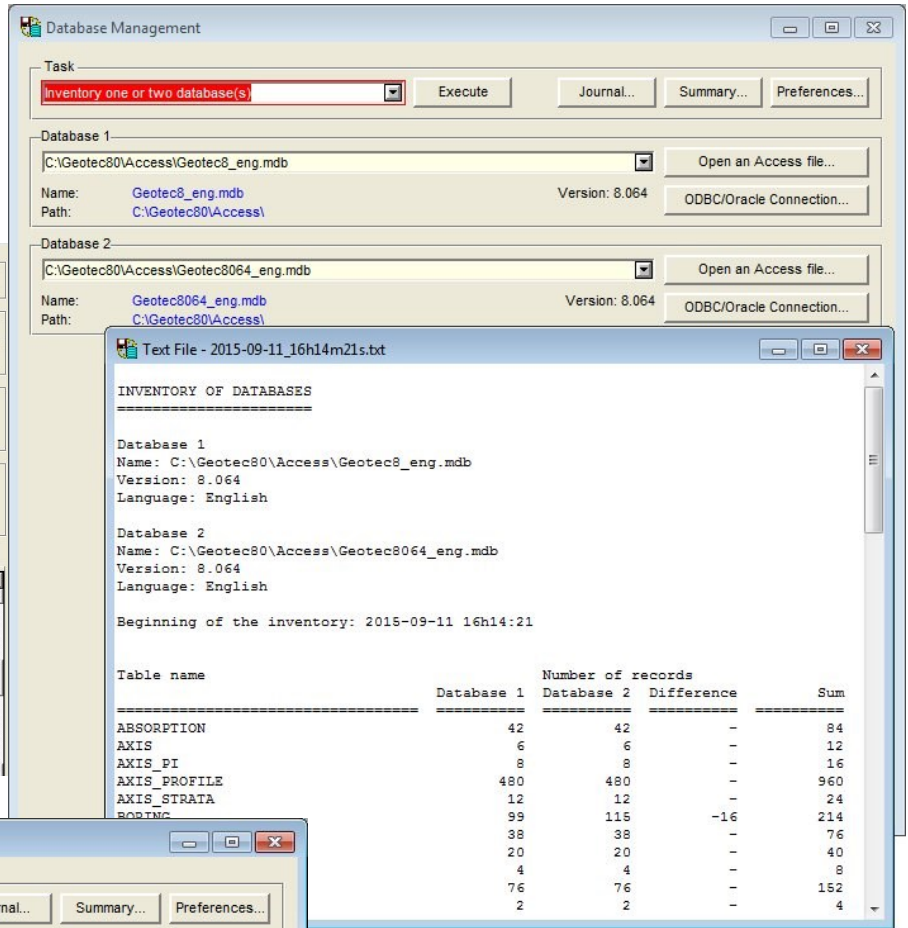
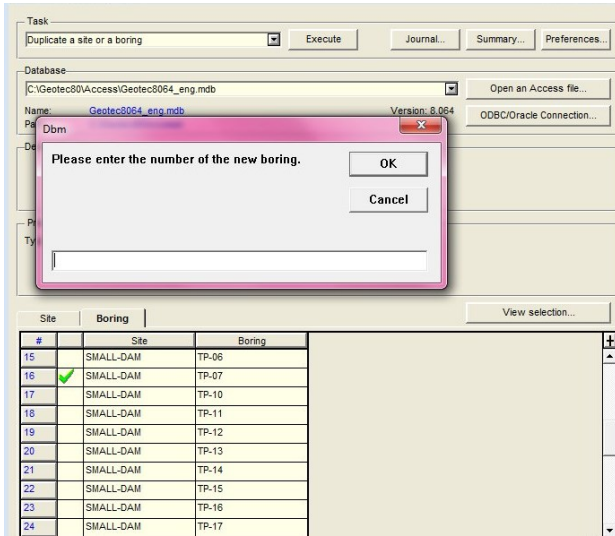


# DBM



DBM is used for global operations of management of Geotec databases, whether these databases are of Access, Oracle, SQL Server or SQLite type.



## Tasks in DBM

- ⇒ Creation of empty Geotec databases under Access, Oracle, SQL Server or SQLite
- ⇒ Update of a database
- ⇒ Exportation of data from one database to another
- ⇒ Duplication of a site or boring
- ⇒ Deletion of data from a database
- ⇒ Inventory of the content of one or two databases
- ⇒ Calculation of longitudes and latitudes of sites and borings from their coordinates
- ⇒ Conversion of depth and length units from the imperial system to the international system or vice versa



4205 Northcliffe, Montreal, QC H4A 3L2  
514-285-4873 [www.sobek-technologies.com](http://www.sobek-technologies.com)